



TOGETHER,  
LET'S PROTECT THE FUTURE!

12 656 hectares protected in perpetuity

2015-2016  
ACTIVITY REPORT





# NETWORK OF AFFILIATE MEMBERS AND NATIONAL PARTNER



# A WORD FROM THE PRESIDENT



Another year has gone... and what a year! In spite of the difficulties and challenges we encountered, we contributed to the creation of twelve new protected areas, including a nature reserve on private land, which brings the size of the territory we oversee to almost **12,656 ha of land protected in perpetuity**. This is the result of continued collective efforts from our organization and

from affiliate members, partners - especially Nature Conservancy Canada - financial supporters, property owners in the area, and donors.

As you will see, we were not idle! I would like to highlight some key projects our organization has worked on throughout the year.

First, we acquired L'Annedda Nature Reserve, in Ulverton, by the Saint-François River, thanks to the generosity of Mr. Plante and his wife, Mrs. Moisan. We are extremely proud and grateful for that gift.

We also won the Award of Excellence from the Fondation estrienne en environnement for the Corridors project. Our dear departed friend and co-founder, Terri Monahan, also received a posthumous Award of Excellence for her personal contribution.

But we didn't stop there! We launched an important project to protect the peripheral area of Mount-Orford National Park, as part of our efforts to connect large forest blocks. This will link the Park with surrounding natural environments and prevent its ecological isolation. This major project will help us develop more expertise and broaden our influence.

And of course, over the course of a year, we sowed and reaped the fruits of our labours and that of our fundraising committees with our major fundraising campaign. Thanks to the exceptional generosity of our donors, we reached our goal of one million dollars in donations and pledges. The first project to benefit from these funds is the réserve naturelle des Montagnes-Vertes, Sutton sector. Our fundraising campaign will still continue for some time. At a time where the environment and biodiversity are so threatened, our needs keep growing and we hope to secure the means to address them.

I wish to thank all the members of our team for their constant and tireless efforts. Your enthusiasm and energy are inspiring and I am exceedingly proud to work beside you every day. Please accept my sincere thanks for your sustained efforts and commitment.

Happy reading,

Marie-José Auclair, President of the board

# A WORD FROM THE ACTING EXECUTIVE DIRECTOR



Appalachian Corridor is a great organization sustained by people totally committed to its cause. It relies on partnerships like the ones we formed with our 17 affiliate members and our national partner, Nature Conservancy Canada. Thanks to our funders and the many donors who support us, Appalachian Corridor continues to generate immeasurable

benefits that will last in perpetuity. Nothing less.

This year, it has been an immense privilege for me to work with such a qualified, professional and dedicated team. It allowed me to learn - at warp speed - all the

finer points of the world of conservation. Like Obélix, I fell into the magic potion and now, nothing can stop my quest to protect natural areas. I am extremely lucky to play that role. Few people can claim to be guided by a Board of Directors with the commitment and experience to not only protect mountains but also to move them!

It is a great pleasure for me, the entire team and the Board of Directors to present our 2015-2016 activities report.

I hope you enjoy reading it and I look forward to continuing this great adventure with you and our Executive Director, Mélanie Lelièvre, who will be back this summer.

Martine Ruel, Acting Executive Director



# BOARD OF DIRECTORS

Marie-José Auclair, President  
Louise Gratton, Secretary  
Luc Dumouchel, Treasurer  
Pierre Lizotte, Board Member

Françoise Bricault, Delegate for Eastern  
Affiliate Members  
Marie-Claire Planet, Delegate for Western  
Affiliate Members

## PROTECTING AND ENHANCING NATURAL HABITATS IN SOUTHERN QUÉBEC

Appalachian Corridor supports landowners who want to protect their land in perpetuity. It supports a network of local conservation groups to whom it provides expertise in science, management and implementation of conservation actions. In 2015-2016, Appalachian Corridor completed **12 notarized case files and added 528 hectares of protected areas to its territory of action**, including a 334 hectares transaction that will open a new door onto the Réserve naturelle des Montagnes-Vertes, Sutton sector.

» **528 hectares** of new protected areas, which brings to **12,656 ha the total area of protected private lands**:

- L'Annedda **Nature Reserve** – 5.1 ha
- **9 land donations** projects with our Affiliates:  
Conservation des vallons de la Serpentine - 19 ha,  
Société de conservation du mont Brome - 16 ha,  
Mont Echo Conservation Association - 13 ha, and  
Massawippi Conservation Trust - 105 ha;
- 2 agreements for a sale or bargain sale concluded with Nature Conservancy Canada (NCC) - 334 ha, and the MCT - 346 ha.



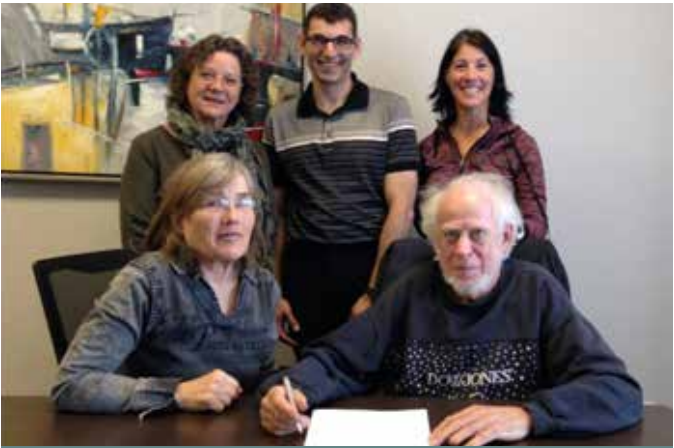
Marie-José Auclair hands a recognition to Mr. Plante and M<sup>re</sup> Moisan for their generous gift.

» **6 applications for the recognition of private lands as nature reserves** submitted to the ministère du Développement durable de l'Environnement et de la Lutte contre les changements climatiques (MDDELCC), in Brome Lake, Shefford, Granby and Sainte-Catherine-de-Hatley, for a total of 375.88 ha;

» Initial contact with numerous landowners and with owners of chimneys home to chimney swifts in Magog and Dunham;

» Stewardship project with a landowner whose property features high-quality habitats for the Golden-winged Warbler;

» **Another ten land conservation projects**, which are well underway and should be completed in 2016-2017.



Ms. Leclerc and Mr. Labonville sign the legal document sealing the protection of their land.



The team in action: Marking L'Annedda Nature Reserve.

### » Protection of the peripheral zone around Mount-Orford National Park

Together with the Fondation de la Faune du Québec, the Habitat Stewardship Program for Species at Risk of Environment & Climate Change Canada, and Mount-Orford National Park, we worked on an major protection project in the peripheral zone of the Park.

- Public and private meetings with some forty owners of land exceeding 5 hectares in the periphery of Mount-Orford, to raise their awareness of the great ecological wealth of their lands.
- Dozens of individual solicitation meetings with owners, many of whom are located in the natural corridors and peripheral zone of Mount-Orford National Park.



### » Management and improvement of the Réserve naturelle des Montagnes-Vertes (RNMV)

- Management and surveillance of the RNMV's 7,000 ha territory (patrolling the trails and protected areas);
- Presence at the Montreal's Salon aventure et plein air, which attracted thousands of visitors;
- Follow-up of a research project with the Université de Sherbrooke, looking at diagnostic tools and analysis of the condition of PENS hiking trails;
- Annual follow-up of research projects with the Université du Québec à Montréal looking at the distribution of forest species resulting from climate change, and at the evolving ecology of the Eastern chipmunk;
- Strategic approach of landowners in the periphery of the RNMV;
- Establishment of a consultation group with the citizens of Potton.



Protection project in the peripheral zone of Mount-Orford National Park.





# ACQUIRING AND SHARING KNOWLEDGE OF THE TERRITORY'S ECOLOGY

Acquiring knowledge is at the heart of the Appalachian Corridor initiative. An experienced team of Biologists, along with Bio-ecology Technicians, complete ecological surveys and monitoring of species at risk. The GIS department supports this work and conducts analyses to target intervention priorities.

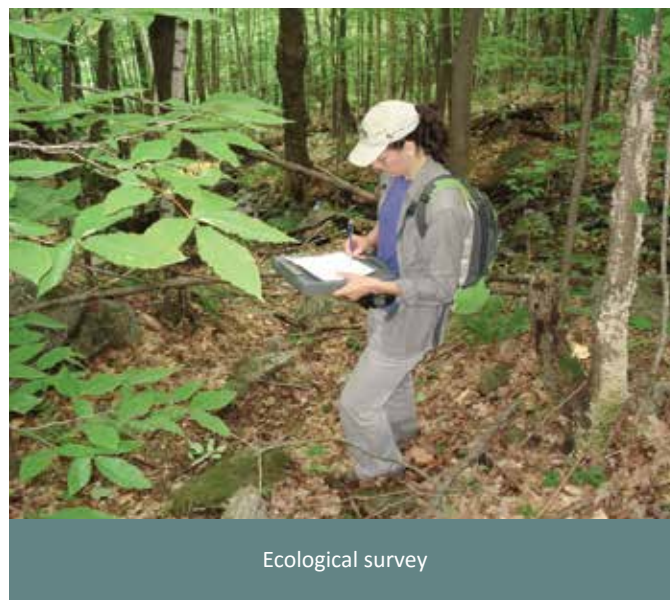
- » 14 ecological surveys conducted on as many properties, to help landowners in their conservation efforts;
- » Implementation of a conservation strategy for the Brompton Lake watershed area, on behalf of the Association pour la protection du lac Brompton;
- » Work to control the European Buckthorn in a key habitat for the Golden-winged Warbler;
- » Monitoring species at risk such as the Cougar, Peregrine Falcon, Bicknell's Thrush, Chimney Swift, Golden-winged Warbler (in collaboration with the Club des ornithologues de Brome-Missisquoi) and Wood Turtle;
- » Recovery activities for three populations of American Ginseng
- » Participation in provincial groups that implemented recovery activities for the Wood Turtle and American Ginseng;
- » Consulting mandates:
  - Portrait of the natural environments in the municipality of Stanstead Township, including compilation of existing data and GIS analyses for Memphremagog Conservation Inc.;
  - Validation of infrastructures (trails, forest roads, parking areas) in Shefford, Sutton and Eastman.



Species monitoring



Fieldwork



Ecological survey

# SUPPORTING LOCAL DRIVING FORCES ON CONSERVATION ISSUES

Appalachian Corridor continues to consolidate conservation activities within its territory of action by providing leadership along with technical, scientific and financial support to 17 local organizations and one national partner (CNC); all committed to protect natural habitats.

- » Affiliation of a new member: the Société de conservation du Mont-Brome (SCMB);
- » 18 planning sessions with 10 of the 17 Affiliates involved in conservation projects;
- » Participation in three Annual General Meetings (AGMs) of our Affiliates;
- » Attendance to other organizations' meetings and AGMs (municipalities, Réseau des milieux naturels protégés, Fondation SÉTHY, Agence forestière de la Montérégie);
- » Training sessions on conservation tools, use of a hand-held GPS (theory and fieldwork), and stewardship of protected properties;
- » Development of new partnerships, in particular with the Société des établissements de plein air (Sépaq);
- » Financial and logistical collaboration with our national partner, CNC, for the protection of a 334-ha territory adjacent to the RNMV;
- » Creation of a regional committee composed of affiliate members and representatives from the Réseau des milieux naturels protégés (RMN) to discuss the issue of municipal taxation of nature reserves;
- » Hiring of an intern during the summer of 2015, to help Affiliates with the stewardship and management of protected properties, and of 2 patrollers to monitor the RNMV;
- » Support given to the Association des riverains du Lac-à-la-Truite and to the Association pour la protection du lac Brompton in their process of acquiring charitable status and eligibility as recipients for the Ecological Gifts Program.

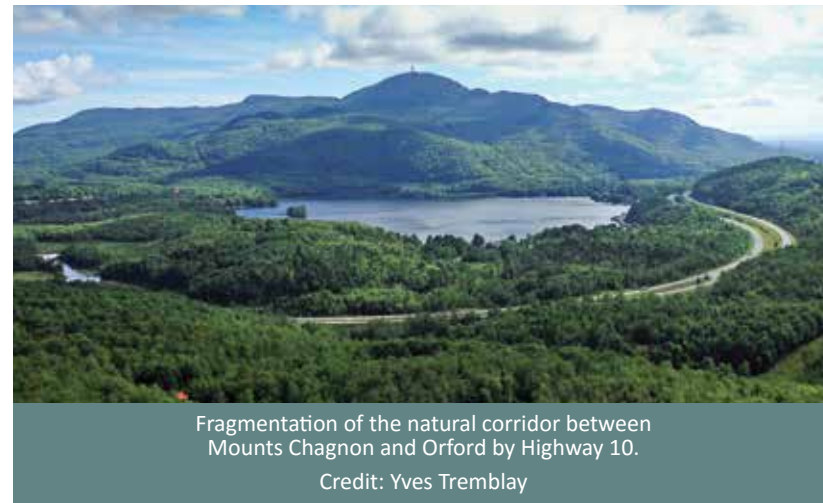


Press conference announcing the affiliation of SCMB and Mr. Philibert's donation.



# PROMOTING THE CONSERVATION OF NATURAL AREAS AND INFLUENCING LAND-USE PLANNING

One of our main objectives is to see a better account taken of biodiversity in land-use planning. We particularly wish to **promote the integration of the ecological network** in land-use and urban planning schemes. Below are two projects that illustrate our participation in collective actions to reach those goals.



## The Corridors project – winner of the 2015 award of excellence of the Fondation estrienne en environnement

This project aims to ensure the permanence of natural links between large forest blocks and survival of wide-ranging species, and represents a strategy for adaptation in the present context of climate change. Here are the major steps accomplished this year:

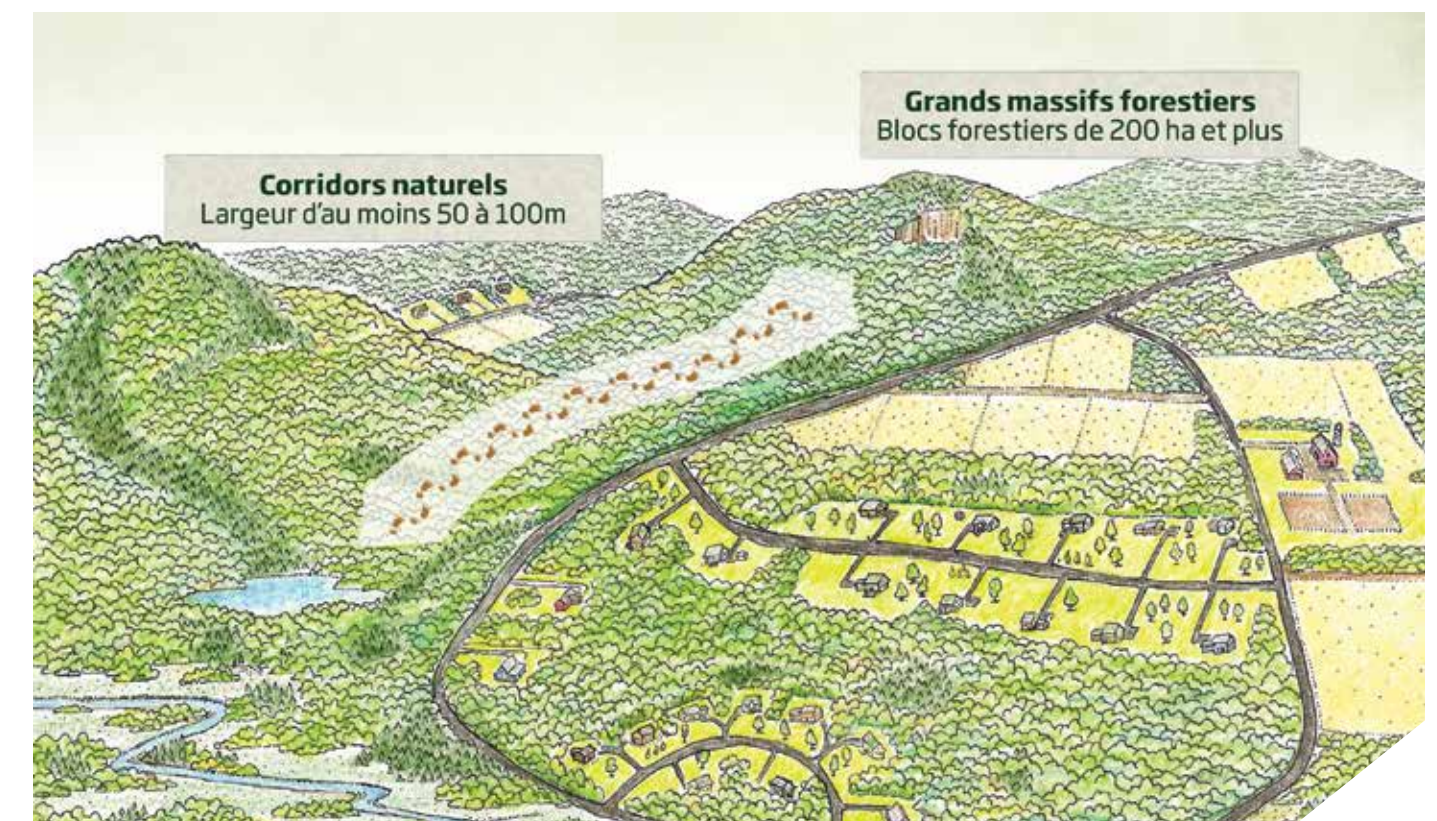
- Joint supervision (with a University de Sherbrooke professor) of a master's student for the analysis of roadkill data, characterization of Highway 10 infrastructures, and identification of priority areas within which to implement a monitoring program for wildlife movements;
- Development, with Concordia University, of a project to further our knowledge of wildlife crossings, and preparation of a joint funding application;
- Detailed validation of the natural corridor linking Mounts Chagnon and Orford, for the revision of town plans in Austin and Magog;
- Meeting with the towns of Austin and Magog to facilitate the integration of natural corridors in their land planning and development tools



# Make Room for Wildlife project

Appalachian Corridor also published *Cohabiter avec la nature!*, a guide for urban planners, developers and local communities in the Appalachians of Southern Quebec. It aims to facilitate a land-use and development planning that is in harmony with nature. It's a Quebec adaptation of *Make Room for Wildlife*, published by the Adirondack Program of the Wildlife Conservation Society, with original illustrations by Jason W. Smith.

- » Presentation of the guide and recommended practices to targeted audiences:
  - Council of mayors of two Regional County Municipalities (RCMs): Haute-Yamaska and Memphremagog;
  - Municipalities of Pottou, Shefford, Waterloo, Eastman, Saint-Étienne-de-Bolton and Frelighsburg;
  - Ecosphere Environmental Fair in Montreal and Brome, and Forum on sustainability at the University of Sherbrooke as part of workshops on the preservation of natural environments.
- » Distribution of the guide to the Ordre des urbanistes du Québec, the Association des aménagistes régionaux du Québec and key environment resources in all the municipalities of our territory of action;
- » Issue of a press release;
- » Planning of a second phase to mobilize local communities.





# INFORMING AND EDUCATING ON THE IMPORTANCE OF THE NATURAL HERITAGE

During meetings with its partners and the public, Appalachian Corridor informs and educates individuals, groups and organizations on the importance of protecting the natural environment. It raises awareness on issues and offers coping strategies to implement for the protection of biodiversity in the Appalachians of Southern Québec.

- » 30 presentations at conferences and other events;
- » 30 articles mentioning Appalachian Corridor, 10 press releases, 2 radio interviews, one television interview and 2 mentions on the radio;
- » Publication of articles by Appalachian Corridor in a range of specialized magazines: *Le Jaseur* (published by the Société ornithologique de l'Estrie), *In Vivo* (journal of the Association des biologistes du Québec); *Le Progrès forestier* (magazine of the Agence forestière du Sud du Québec) and the Town of Potton's municipal newsletter.
- » Participation in an exhibition at a dozen events, symposia, forums and conferences related to our activities;
- » Publications on different species and news on our Facebook page, which counts more than 670 followers;
- » A fall edition of Appalachian Corridor News distributed to 11,000 households in paper form and to 1,000 people electronically.



Participation in Conservation Workshops in 2015 .

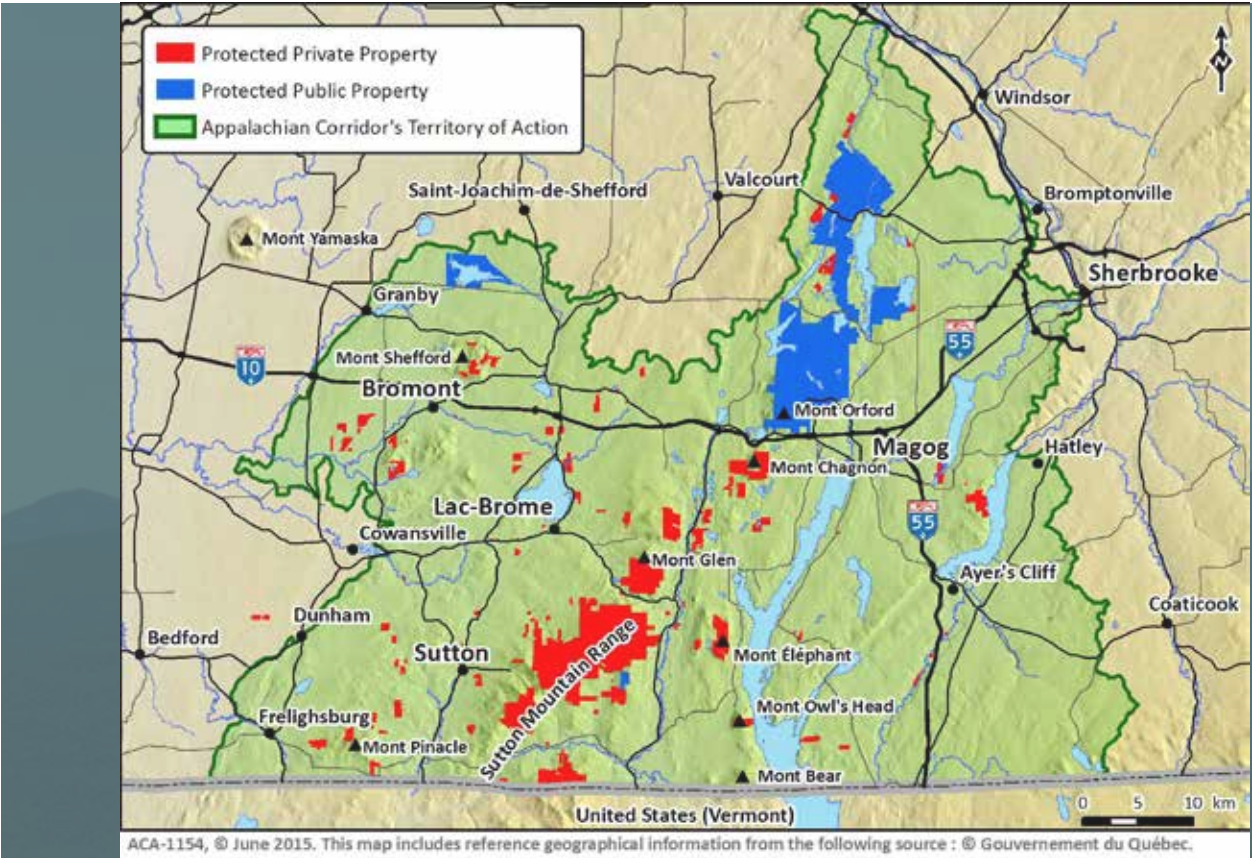
## MAJOR FUNDRAISING CAMPAIGN

- » Launch of the public solicitation phase of the campaign at the Centre d'arts d'Orford;
- » Mailing of a solicitation folder to 25,000 households in our territory of action;
- » Active canvassing of companies, groups and individuals;
- » Substantial contribution to the project to preserve more than 3 km2 in the Montagnes Vertes, Sutton sector;
- » **Achievement of the \$1,000,000 goal;**
- » Development and adoption of a Funds distribution Policy.



Marie-José Auclair and the Campaign's Co-Chairs, Robert Tessier and Alain Lemaire

# PROTECTED AREAS ON APPALACHIAN CORRIDOR TERRITORY



Protected areas  
on private land  
**12 656 ha**

Protected areas  
on public land  
**12 966 ha**

Total percentage of protected  
areas on our territory of action  
**7,40 %**

## APPALACHIAN CORRIDOR'S TEAM



Julie-Anne Bellefleur, Clément Robidoux, Martine Ruel, Vincent Fréchette, Mélanie Lelièvre, Caroline Daguét, Mylène Alarie, David Brisson, Cynthia Patry, Marie-José Auclair



Patrice Pineault,  
GIS Technician



André Champoux,  
Conservation Advisor





## **WE WOULD LIKE TO ACKNOWLEDGE GENEROUS CONTRIBUTIONS FROM THE FOLLOWING DONORS:**

### **Major Donations**

Pierre Lizotte and Power Corporation du Canada

### **Important Donations**

Agropur coopérative, Victor et Elisabeth Allistone, Michel Auclair, Banque nationale, BMO, Camso, Carbonleo, Jean-Marc Eustache, KDC Knowlton, Louise Penny, RBC et Robert Tessier.

### **Special Donations**

Louise Gratton, Marie-José Auclair, Banque TD, Robert Blain, Pierre et Lucie Boivin, Benoît Chartier, René Cloutier, Pierre Fitzgibbon, Fondation Sibylla-Hesse, Gaz Métro, Christian Godin, Groupe Germain, Louis-Thomas Labbé, Peter McAuslan et Ellen Bounsall, François R. Roy, Claude Séguin, Jean Simard et Andrée-Lise Méthot, TC Transcontinental and many more anonymous donors.

### **APPALACHIAN CORRIDOR**

37 des Pins St. S.  
Eastman Qc J0E 1P0

**Tel: 450 297-1145**  
**Fax: 450 297-1102**

[info@corridorappalachien.ca](mailto:info@corridorappalachien.ca)  
[corridorappalachien.ca](http://corridorappalachien.ca)

