

**NON-PROFIT CONSERVATION ORGANIZATION, APPALACHIAN CORRIDOR CELEBRATES ITS 20<sup>TH</sup> ANNIVERSARY IN 2022**

## MISSION

Consolidate and leave a legacy consisting of a vast corridor of protected natural areas in perpetuity.

## VISION

To be the reference in conservation on our territory of action in order to increase the surface of protected areas and to provoke a coherent consideration of the biodiversity in the territory planning.

**TOGETHER**  
**FOR NATURE AND**  
**COMMUNITIES**

**NEW PROTECTED AREAS**  
**ON OUR TERRITORY**  
**954 hectares**



## A WORD FROM THE BOARD CHAIR AND THE EXECUTIVE DIRECTOR

**CLIMATE CRISIS, BIODIVERSITY LOSS, OVERHEATED  
REAL ESTATE MARKET, RECORD INFLATION,  
PANDEMIC REBOUNDS.**

Rarely have we experienced such a turbulent year with its share of stress. All these external factors have quietly climbed aboard our ship, affecting its trajectory. We had to deal with this difficult context, which pushes us to act even more urgently.

Confined to their constricting spaces without the advantages of a big city in times of pandemic, many residents of large urban centers have flocked to the Eastern Townships, resulting in a dramatic increase in vacant land sales.

Never before has Appalachian Corridor received so many calls from citizens distraught over an imminent real estate project in the natural environment they frequent, unfortunately taking for granted that it would remain in its natural state.

We are clearly experiencing the consequences of human-induced crises.

Although this is a pessimistic picture, there are encouraging actions taking place on our territory: citizens are mobilizing and donating generously to protect portions of our territory, municipality councils are becoming increasingly aware of biodiversity issues and nature protection, landowners continue to entrust the future of their land to conservation organizations.

In the meantime, Appalachian Corridor continues to carry its mission and answers the call! Twelve conservation projects were completed this year, generating a total value of \$1.5 million in land donations!

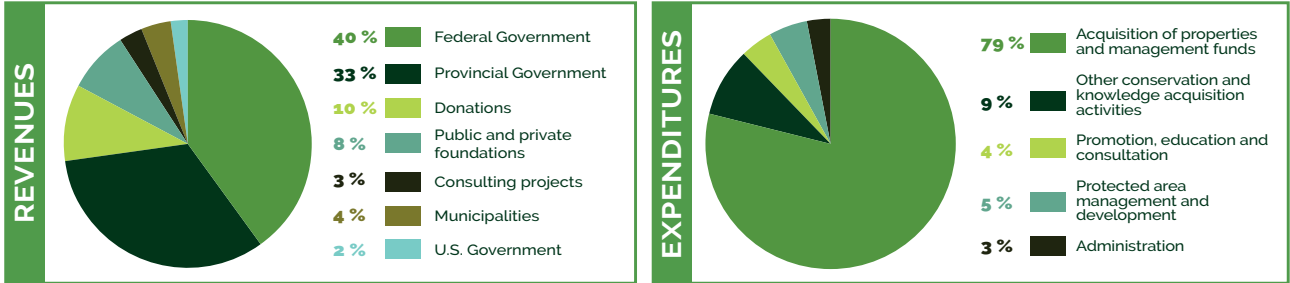
The citizens are expressing their attachment to our natural environments and forests loud and clear. Thus, the entire community is rowing in the same direction as we are, against all odds!

*Marie-Josée Anclair*  
Board Chair  
(right in photo)

*Mélanie Félièvre*  
Executive Director  
(left in photo)



FINANCIAL OVERVIEW | Operating budget of \$7.5 millions



ACQUIRE AND SHARE  
knowledge on the  
territory's ecology

✓ Twenty-five ecological surveys on as many properties

📝 Seven knowledge acquisition projects

Monitoring of the Sutton River wood turtle by telemetry

Validation of ecological corridors in the Highway 10 area, located in the in the municipality of Eastman

Monitoring of turtle mortality on Route 108 in Sainte-Catherine-de-Hatley

Coordination of volunteers and winter tracking in ecological connectivity zones

Validation of trail routes for the Massawippi Conservation Trust, for Les Sentiers de l'Estrie (Mount Echo sector), and for future trails on Mount Foster

Validation of potential bat hibernaculum

Installation of heated bat dormitories

Monitoring and recovery activities for various species at risk:

Peregrine Falcon, Golden-Winged Warbler, Bicknell's Thrush, wood turtle, bats, Chimney Swift.

SUPPORT  
the community's strengths  
in conservation

🌐 **LOCAL | Affiliate members :** Adoption of the new Affiliation Policy with Appalachian Corridor.

**Four training sessions:** support for stewardship, conservation options and support for landowners.

**Twenty-six meetings** for the planning of the year and follow-ups on common projects.



**REGIONAL | First pooling** of the expertise and know-how of conservation organizations working in the Monteregian Hills with the 12 members of the Monteregian Hills Coalition, in partnership with the Montreal Metropolitan Community.

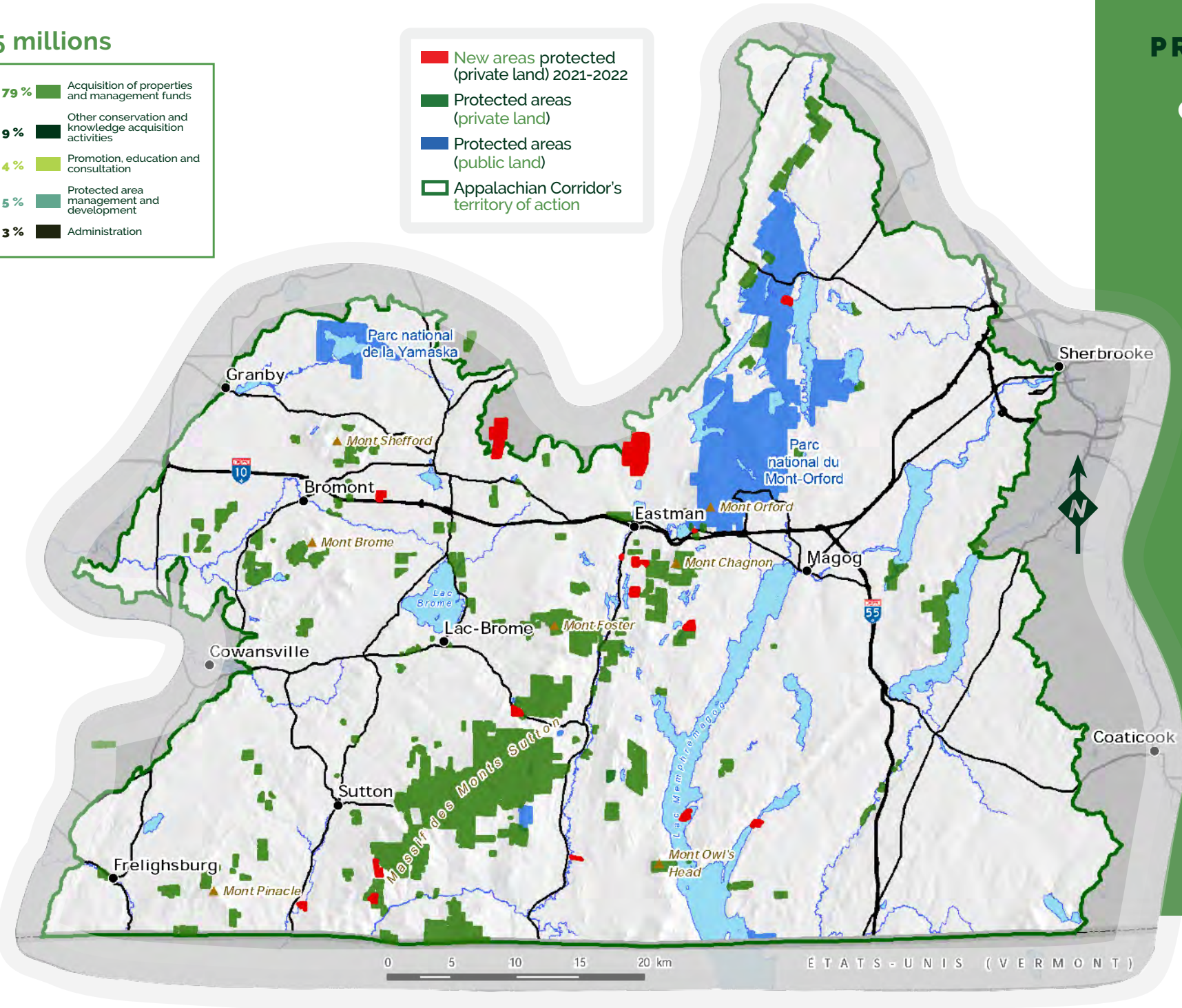
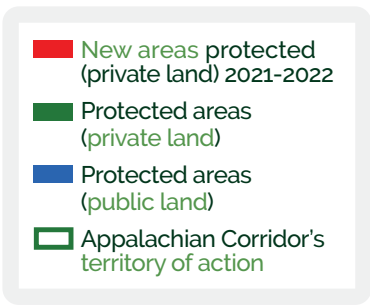
**Partnership project** "Northern Green Mountains: towards land use planning for the protection and recovery of species at risk", which integrates eight regional partners, experts in their respective fields (3rd year).

Four-year objectives:

- Protection of threatened and vulnerable species;
  - Realization of specific action plans for each species;
  - Consideration of ecological connectivity by the municipal sector;
- Webinar: Working as a team: A winning solution for the protection of species at risk.

**NATIONAL | Quebec Ecological Connectivity Initiative:** Mobilization and sharing of expertise with 10 project managers:

- One official launch of 2 tools: MRCs and municipalities  
195 stakeholders present
- One training session dedicated to conservation organizations  
190 participants.



PROTECTED LAND  
on Appalachian  
Corridor's territory



TOTAL  
PROTECTED AREAS

...ON PRIVATE LAND  
**16,203 ha**  
(40,039 acres)

...ON PUBLIC LAND  
**11,856 ha**  
(29,297 acres)

TOTAL PERCENTAGE  
OF PROTECTED AREAS ON  
OUR TERRITORY OF ACTION

**8,12 %**

NEW AREAS  
PROTECTED  
IN 2021-2022  
ON OUR TERRITORY  
**954 ha** (2,357 acres)

ENHANCE  
Selected Protected Areas



**Management of the Green Mountains Nature Reserve** owned by the Nature Conservancy of Canada, covering more than 74 km².



**Monitoring of 87 protected properties**



**Management and maintenance** of our network of nearly 30 km of trails in the Singer sector (RMNV):

- Dismantling of 5 bridges
- Restoration of riverbanks.



**Enhancement of Mount Foster**

- Planning and initiation of a 4.5 km trail network
- Planning and drafting of all signage content.

PROTECT  
natural areas in perpetuity



**Twelve conservation projects concluded**

Totalling 850 hectares of new protected area in perpetuity.



Including 2 conservation easements and 10 in title acquisition. Of these 12 projects, 7 were concluded with our affiliate members.





## INFORM AND EDUCATE about the importance of the natural heritage

Two printed newsletters distributed to **11 000 homes**.

Eight electronic newsletters sent to **2000 recipients**.

**New philanthropic partnerships** with:  
Hydro-Québec, MapleCross Foundation, Charles Dion  
(photographer).

Success of our **150K\$** annual fundraising campaign and  
of a **specific fundraising** of **250K\$** for a conservation  
project.

**MEDIAS | 5 press releases** resulting in more than  
**30 articles** in the written press + over  
**10 television and radio interviews**.

**CONFERENCES | 11 conferences** on biodiversity  
and ecological connectivity, **protection of bats** and  
**conservation options for landowners**.

**SOCIAL MEDIA | 20% increase** of our general  
audience. Creation and diffusion of **3 informative videos** for  
the public.



## Recipient of 3 awards at the 12<sup>th</sup> Brome-Missisquoi Excellence Gala

Company of the year | Innovation | Sustainable development

Recipient of a first honorary award other than  
environmental at the Omer evening, held by the  
Memphremagog Chamber of Commerce to highlight our  
contribution to the reputation of the municipality of  
Eastman.

## BOARD of directors

**Marie-José AUCLAIR**, Board Chair  
**Luc DUMOUCHEL**, Vice-president  
**Peter MCAUSLAN**, Treasurer  
**Louise GRATTON**, Secretary  
**Michel BOIVIN**, Board Member  
**Michel BÉLANGER**, Board Member  
**Marie-Claire PLANET**, Delegate for Western Affiliate Members  
**Françoise BRICAULT**, Delegate for Eastern Affiliate Members

## NETWORK of affiliate members

- Association de conservation de la nature de Stukely-Sud
- Conservation Espace Nature Shefford
- Fiducie Foncière Mont Pinnacle
- Conservation Massawippi Trust-Fiducie
- Ruiter Valley Land Trust
- Parc d'environnement naturel de Sutton (PENS)
- Association de conservation du mont Écho (MECA)
- Société de protection foncière du Lac Montjoie
- Memphremagog Conservation Inc.
- Marais Alderbrooke Marsh
- Fondation Marécages Memphremagog Wetlands Foundation
- Société de Conservation du Mont Brome
- La Société de conservation du corridor naturel de la rivière au Saumon
- Fondation des terres du Lac Brome
- Renaissance Lac Brome
- Conservation des vallons de la Serpentine
- Les Sentiers de l'Estrie Inc.



## PROMOTE the conservation of natural areas and influence land-use planning

### CONNECTIVITY

Plan to improve wildlife permeability and restore  
ecological connectivity on highway 10 (km 74 to 121).  
Meetings with several municipalities and government  
authorities.

#### Quebec Ecological Connectivity Initiative

**Conference** – Ecological connectivity: Urgency and  
necessity to take the lead at the municipal level.

### URBAN PLANNING, DEVELOPMENT AND CONSULTATIONS

**Twenty professional meetings** with various  
municipalities to encourage a better consideration of  
sensitive natural environments or to initiate a  
conservation project on their properties.

Approaches with the City of Waterloo and the municipality  
of East Bolton for the creation of nature reserves on  
municipal properties.

Consultation as an environmental stakeholder in the  
regional wetlands and water plans and regional natural  
environment plans.

Design of a regional strategy on the conservation,  
connectivity and enhancement of ecosystems for the  
Brome-Missisquoi MRC.

### MOBILIZATION

**Accompaniment of the municipalities** of  
Bromont, Shefford, Stukely-Sud, Austin,  
Saint-Etienne-de-Bolton, Eastman and West Bolton to  
promote the maintenance and restoration of ecological  
corridors.

## NATIONAL partner



## FUNDING PARTNERS

- Government of Canada • Government of Quebec
- Nature Conservancy of Canada • Ducks Unlimited Canada
- Hydro-Québec • NMBCA / U.S. Fish & Wildlife Service
- Fondation de la faune du Québec
- MapleCross Foundation • The Echo Foundation
- Caisse de dépôt et placement du Québec
- Québec Bat Recovery Team
- Eco Canada • Project Learning Tree Canada
- Bird Protection Quebec • Weston Family Foundation
- Lake Champlain Basin Program
- Rando Québec
- Municipalities of Bolton Est, West Bolton,  
Saint-Étienne-de-Bolton, Austin and Eastman
- And many private donors



**APPALACHIANCORRIDOR.CA**  
**info@corridorappalachien.ca**

466, rue Principale, Eastman QC JoE 1P0 | 450 297-1145