



© Charles & Annie photographes



STEWARDSHIP AND ENHANCEMENT of protected areas

With **20 active volunteers**, the protected areas stewardship team went on patrol to ensure that the region's natural areas remain healthy, stable and protected. Our team:

- Visited 102 properties, representing 56% of the private protected areas in our territory.
- Patrolled 25 km of established, maintained and managed trails, not to mention the many kilometres of trails maintained by our partners and affiliate members.

The maintenance work carried out by our team included:

- Removing 2.1 tons of waste from Appalachian Corridor properties;
- Replacing Mont Singer's trail network signage;
- Improving Mont Singer's entire trail network;

In addition to **450 hours of volunteer time** devoted to protected areas and trails.



THANK YOU to our Board of Directors

Marie-José AUCLAIR, Chair
Luc DUMOUCHEL, Vice-Chair
Peter McAUSLAN, Treasurer
Michèle TURCOTTE, Secretary
Michel BOIVIN, Board Member
Jean-François GIRARD, Board Member
Linda GHANIMÉ, Board Member
Claude BÉRUBÉ, Board Member
Danielle DANSEREAU, Western Affiliate
Members Delegate

AFFILIATE Members

- Alderbrook Marsh Land Trust
- Association de conservation de la nature de Stukely-Sud
- Brome Lake Land Foundation
- Conservation des vallons de la Serpentine
- Conservation Espace Nature Shefford
- Conservation Lac Brome
- Fondation pour la conservation et la protection environnementale du bassin versant du lac des Sittelles
- La Société de conservation du corridor naturel de la rivière au Saumon
- Les Sentiers de l'Estrie Inc.
- Massawippi Conservation Trust
- Memphremagog Conservation
- Memphremagog Nature Foundation
- Mount Écho Conservation Association
- Mount Pinnacle Land Trust
- Parc d'environnement naturel de Sutton
- Ruiter Valley Land Trust
- Société de Conservation du Mont Brome
- Société de protection foncière du Lac Montjoie



APPALACHIANCORRIDOR.CA
info@corridorappalachien.ca



SUPPORTING the community's strengths in conservation

Our affiliate members and conservation partners work with us to create an effective network of stakeholders that draws on a variety of strengths. This highly effective network has completed a variety of projects, including:

- **1 new affiliate member** has joined our network;
- Held **two hands-on training days**, one in an agricultural sector and one on different conservation options;
- Attended **seven annual general meetings** of affiliate members;
- Held **annual planning meetings with 11 affiliate members** to identify key priorities;
- Organized the first annual **strategic meeting** with affiliate members and a networking event, attended by 24 participants from 12 organizations, to build relationships and enhance the network's capabilities;
- Held **five training sessions** for volunteers and affiliate members on patrolling, tracking, orienteering and GPS, landscape connectivity, and PIVOT carbon credits;
- Participated in meetings held by the **Quebec Ecological Corridors Initiative** and the **Coalition des Montérégiennes** to promote landscape connectivity at the provincial and regional levels;
- Published a guide for municipalities and RCMs on **culvert construction** and landscape connectivity;
- Held meetings with partners in the **Community-Nominated Priority Places** Program to enhance cooperation among organizations working to protect species at risk.

Our national PARTNER



THANKS to our financial partners

- Government of Quebec
- Government of Canada
- Nature Conservancy of Canada
- ECO Canada
- Lake Champlain Basin Program
- 1% for the Planet
- Woodcock Foundation
- Fondation de la Faune du Québec
- Fonds de solidarité FTQ
- Fondation Les Roses de L'espoir
- Rando-Québec
- Ducks Unlimited Canada
- Municipality of Pottton Township
- Municipality of Bolton-Est
- US Government (US Fish and Wildlife)
- La Caisse de dépôt et placement du Québec
- Bird Protection Quebec
- Local elected officials in charge of funding: Gilles Bélanger, Éric Girard, Isabelle Charest and Benoit Charrette
- And our many private donors.

THANK YOU! Your support has never been more vital!



466, rue Principale, Eastman QC J0E 1P0 | 450 297-1145



TOGETHER, we can protect biodiversity

18,967 hectares PROTECTED IN PERPETUITY!



MISSION

To consolidate and leave in perpetuity a vast corridor of protected natural areas.

VISION

In response to the climate and ecological crises, to promote global awareness of biodiversity and increase the number of protected areas, by setting the standard for conservation and ecological land-use planning.

PROTECTING THE FORÊT BRIÈRE

As many of you know, our team's flagship project this year – completed in collaboration with our national partner, the Nature Conservancy of Canada – was protecting the Forêt Brière. Thanks to Guy Brière's generous land donation, worth \$7.4M, and the support of governments, businesses, private foundations and the generosity of our many donors, we

were able to protect 540 hectares in the heart of the Northern Green Mountains. The success of this campaign ensures that this ecologically important forest will be preserved in perpetuity.

This transaction, which represented an investment of over \$16.4M, involved a local fundraising campaign that raised \$1.2M, with over 500 donors helping to make it happen. This campaign is a perfect example of how important it is to work together to protect nature!

ANNUAL REPORT 2024-2025



MESSAGE from the Chair and Co-Executive Directors

We are proud to announce that **nearly 19,000 hectares of land** in the Northern Green Mountains **are now protected in perpetuity**.

This impressive achievement is the result of a **shared commitment and outstanding collaboration** between Appalachian Corridor, its national partner Nature Conservancy of Canada (NCC), all of its affiliate members and conservation partners, as well as a growing number of private citizens who care deeply about protecting nature.

Together, we're making real progress towards **preserving our region's environmental wealth** and, at the same time, **safeguarding essential wildlife habitats**.

The Appalachian Corridor team completed 14 conservation projects this year, including its flagship **conservation project: the Forêt Brière** in Pottton and Sutton.

Every conservation project presents unique challenges, but thanks to the hard work and commitment of everyone involved. We are getting closer to our shared goal of protecting 30% of the territory by 2030. Behind these projects is a deep connection landowners have to their land, which is often passed down from generation to generation. **Every hectare of protected land is a demonstration of our love of nature, our shared commitment to biodiversity, and our desire to leave a legacy for future generations.**

With hope and determination, our team is working to turn our vision into reality. By taking action at every level of government and civil society, we can ensure a future where nature and communities live together in balance and harmony.

Every act matters. Every contribution is a win for nature. You can make a difference.

Caroline Bisson and Laurie Marchand
Interim Co-Executive Directors (left and right in photo)

Marie-José Auclair
Chair, Board of Directors (middle in photo)



© Charles & Annie photographes

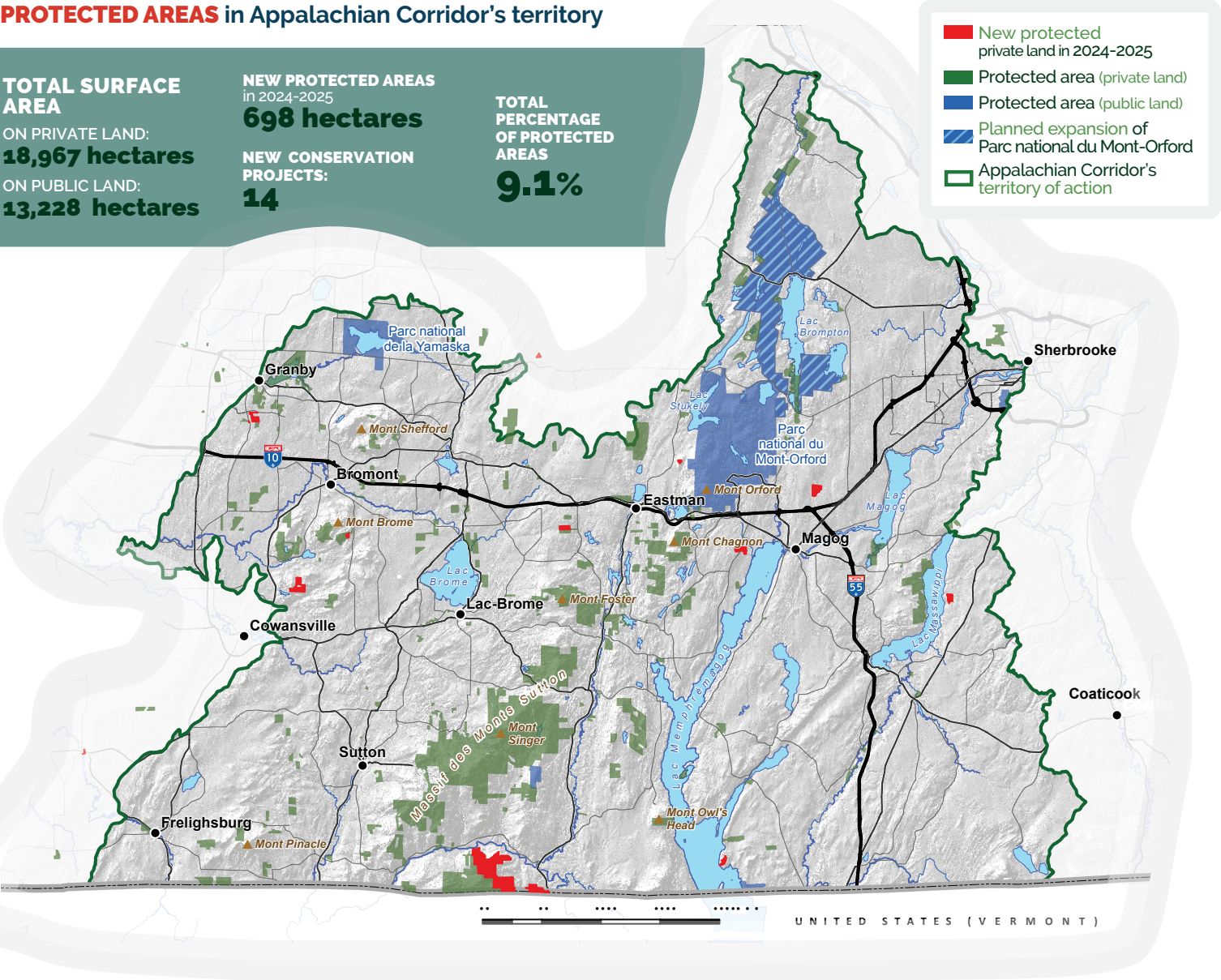
PROTECTED AREAS in Appalachian Corridor's territory

TOTAL SURFACE AREA
ON PRIVATE LAND:
18,967 hectares
ON PUBLIC LAND:
13,228 hectares

NEW PROTECTED AREAS
in 2024-2025
698 hectares

NEW CONSERVATION PROJECTS:
14

TOTAL PERCENTAGE OF PROTECTED AREAS
9.1%



PROTECTING
natural areas in perpetuity

Our team completed **14** different conservation **projects**:

- **5 projects for Appalachian Corridor**
- **1 project for the municipality of Eastman**
- **6 projects for our affiliate members**
- **2 projects leading to nature reserve designations on private land**

Together, these projects represent an additional 698 hectares of protected land.



The peak of Mount Lily-Butters, a local landmark covering 4.45 hectares, is now protected thanks to the combined efforts of its owners, the municipality of Eastman, and Appalachian Corridor. The owners generously agreed to donate part of the land's value; the municipality purchased the remainder and is committed to ensuring its conservation.



ACQUIRING AND SHARING on the territory's ecology

Our knowledge acquisition team criss-crossed the region to learn more about local biodiversity and add to our store of scientific knowledge. Their activities included:

- **23 ecological surveys** on as many properties;
- **12** knowledge acquisition **projects** on priority species;
- Inventory of **dragonflies** (over 70 species recorded) and moths (over 330 species recorded);
- Monitoring turtle mortality in the vicinity of Highway 10's Exit 115 in Magog;
- Monitoring **Peregrine Falcon** nesting sites on several rock faces;
- Monitoring **Bicknell's Thrush** populations at the Round Top in the Sutton Mountains;
- Monitoring the **Wood Turtle** population along the Sutton river and other waterways;
- Monitoring the **Common Swift**;
- Monitoring **bats** on Sherbrooke's Mont Bellevue;
- Studying the **Spring Salamander** and **Least Bittern** populations.



INFORMING AND EDUCATING
about the importance of the natural heritage

The Communications and Philanthropy team have been busy promoting our organization:

- **2** issues of our **bulletin** were distributed to over **20,000** households.
- **6** **electronic newsletters** were sent to over **2,500** subscribers.

MEDIA

- **6** **press releases**
- Mentions in over **50** **media articles**
- Over **15** **TV and radio interviews**

CONFERENCES, EDUCATIONAL AND HANDS-ON ACTIVITIES

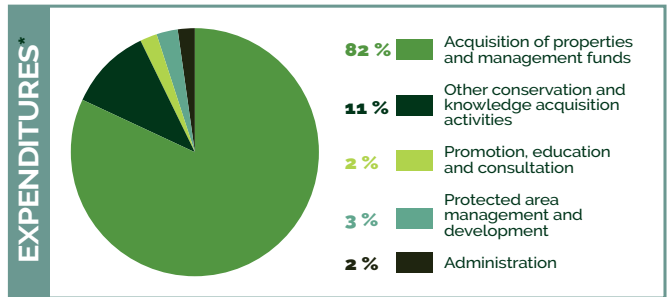
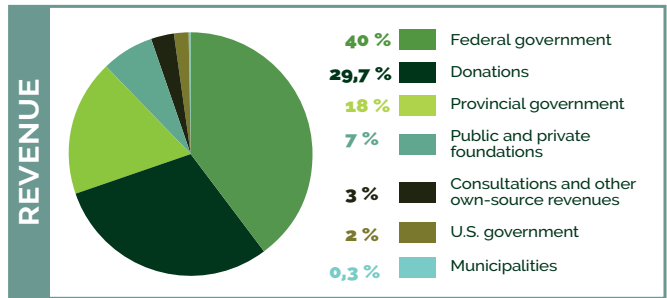
- **2** talks on ecological connectivity for the general public, local elected officials, and technical staff.
- **19** awareness-raising activities.

Over 1,400 people took part in these events!

Not to mention our citizen-led **FUNDRAISING CAMPAIGN** that raised more than \$1.2M to protect the Forêt Brière in perpetuity.



FINANCIAL OVERVIEW
An operating budget of \$15,56M



*Note that the proportion for the "Acquiring properties" expense item is higher this year due to the Forêt Brière land acquisition, which cost \$8.2M (for the part of Appalachian Corridor). The other expense items followed a steady growth trend compared to previous years.



© Charles & Annie photographes



PROMOTING
conservation of natural areas and influence land-use planning

Our municipal authorities play an important role in local conservation and know they can count on our organization to support them in their efforts. In 2024-2025, our team:

- **Worked closely with local municipalities and RCMs** to integrate **environmental protection** and **ecological connectivity** into land use planning tools;
- Organized two **Rendez-Vous des Montagnes Vertes** events for municipal officials and elected representatives, each attended by approximately 75 participants;
- Provided one training session for members of the **Ordre des urbanistes du Québec**;
- **2** presentations to **UQAM** urban planning students in their land use planning course;
- Met several times with municipalities and owners of land identified as strategically important in the Highway 10 connectivity plan;
- Participated in consultation workshops, specifically one with Eastern Township land use planners and the Conseil régional de l'environnement;
- Spoke at the **Horizon Nature Bas-Saint-Laurent** conference;
- Participated to the Steering Committee of the Staying Connected Initiative (SCI), a cross-border partnership that works to maintain ecological connectivity;
- Participated in organizing the **Northeastern North America / Turtle Island Landscape Connectivity Summit**;
- Participated to the **International Land Conservation Network (ILCN) Congress**.



The 6-day 2024 International Lands Conservation Network (ILCN) Global Congress included a study tour in Bromont. During the tour, which took place on October 15, Appalachian Corridor team's presented the outstanding Mount Gale conservation project and the Highway 10 connectivity plan.

